

foster+freeman

Crime-lite®

FORENSIC ALS TECHNOLOGY





"I have personally had a great professional experience with foster+freeman for the last decade. My Police Department has purchased two Crime-lite X10s and one Crime-lite AUTO. We are in the process of procuring two additional Crime-lite AUTOS"

Forensic Examiner, City and County Police Dept.

"Light intensity, construction, versatility, convenience, and overall quality are outstanding. New light sources have been developed by forensic professionals for forensic professionals"

University Program Director, Crime Scene Investigation

"This piece of equipment did more to improve this office's ALS capabilities than any other ALS equipment previously utilized by this office's personnel"

Forensic Examiner, US Military

Crime-lite® PRO

Best-in-class forensic search tools trusted and relied on by law enforcement, military, and clinical forensic examiners worldwide.

Crime-lite® **AUTO**

SEARCH
DETECT
CAPTURE

All-in-One Forensic Illumination & Imaging Solution

1

Crime-lite® **82S** PRO

Gold-Standard LED Alternate Light Sources

3

Crime-lite® **LASER**

BLUE 447

GREEN 520

Intense, Ultra-Narrowband LASER Illumination

4

“Forensic imaging technology meets powerful multi-spectral illumination, in this complete solution to the search, detection, and capture of evidence”

Crime-lite[®] AUTO

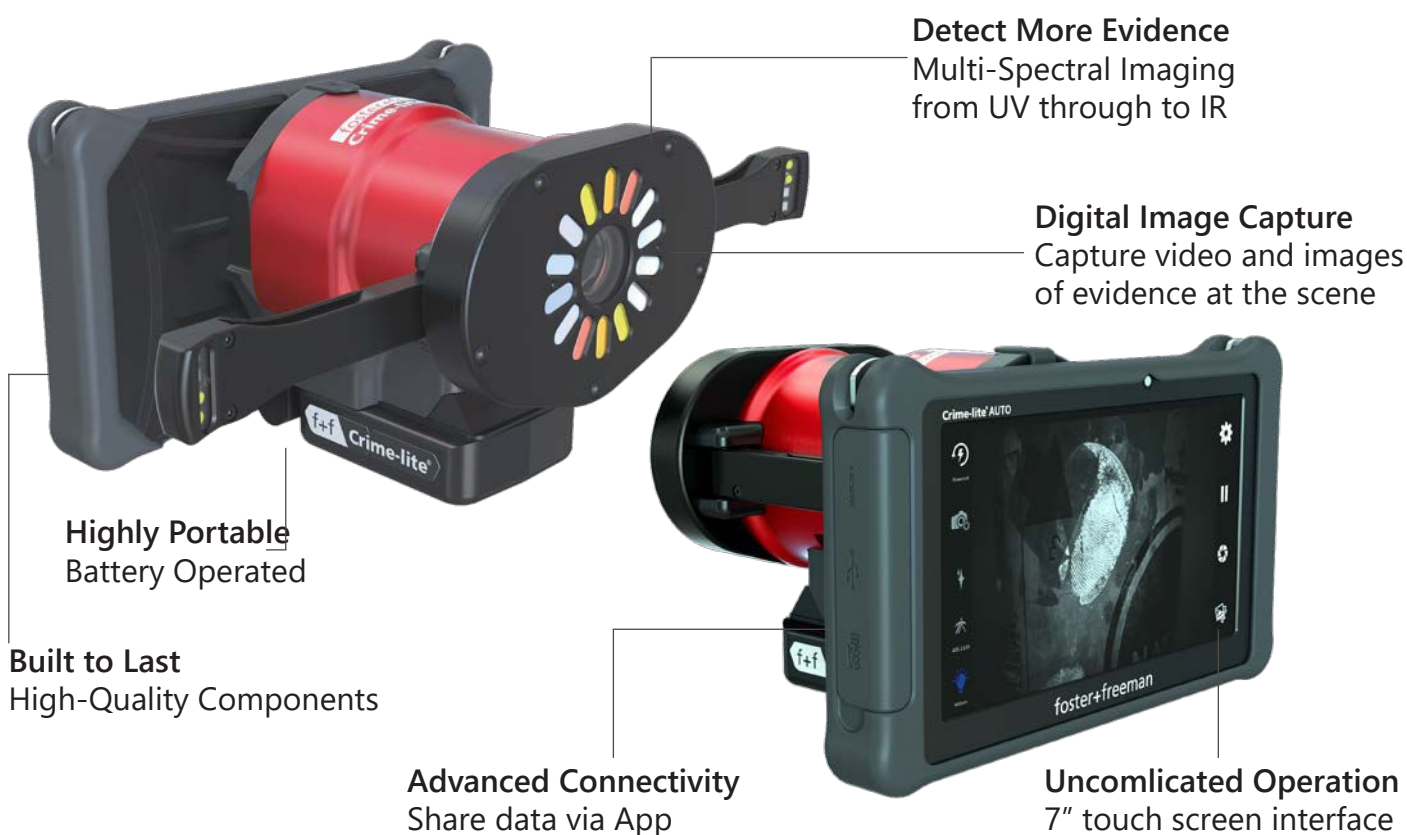
SEARCH
DETECT
CAPTURE

Best-in-Class Technology

A Complete Evidence Search Tool

Expert Technology, Simply Operated

The all-in-one forensic search, detection and imaging device, Crime-lite AUTO is the must-have technology for the forensic and crime scene professionals worldwide.



Why Crime-lite AUTO?

All-in-One Solution

3 essential technologies in a single handheld device:

- ▶ High-intensity Illumination
- ▶ UV-Vis-IR Camera
- ▶ Intelligent Filtration

Streamlined Examinations

Perform a fast and effective search for evidence:

- ▶ Evidence Detection
- ▶ Auto-Focus Photography
- ▶ Remote Image Transfer

Full-Spectral Imaging

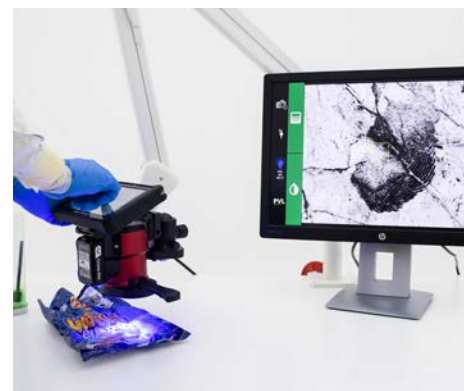
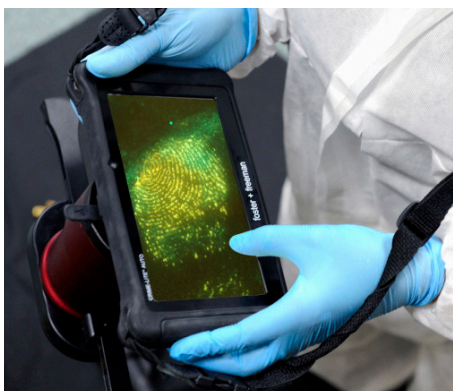
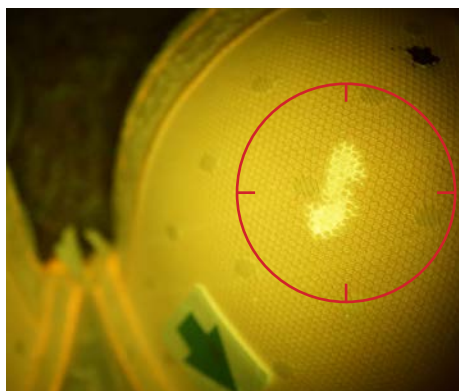
for the detection of 'invisible' items of evidence:

- ▶ Infrared Imaging
- ▶ Fluorescence Examination
- ▶ Intelligent Filtration



Search, Detect, and Capture evidence

Increase DNA Yields		Detect More Evidence		Visualise Fingermarks	
Body Fluids	Blood	Tool Marks	Fibres	Cyanoacrylate	Powders
Hair	Bone & Tooth	Narcotics	Shoe Prints	Dye Stains	Ninhydrin



“An ALS range that ensures the highest quality of results, increasing evidence yields and providing superior visibility for the examination and photography of evidence.”

Crime-lite[®] 82SPRO

Tried & Trusted Technology

Superior Detection of Evidence

Power, Intensity, and Performance

Used and trusted by law enforcement, military, & clinical forensic examiners worldwide, Crime-lite 82S light sources can be relied upon to provide the high-intensity narrow bandwidth illumination required to detect even the smallest traces of forensic evidence.



Why Crime-lite 82S PRO?

The World's #1 LED ALS
Providing unrivalled beam intensity and performance:

- ▶ 16x LEDs per Wavelength
- ▶ High-Intensity Beam
- ▶ Always 100% Output

Durable, Reliable Performance
Proven technology tried and trusted by experts worldwide:

- ▶ Unrivalled Build Quality
- ▶ Best-in-Class Components
- ▶ Rigorously Tested

Detect More Evidence
Search the forensic spectrum to detect more evidence.

- ▶ Fingerprints
- ▶ Body Fluids
- ▶ Physical Evidence

“Intense, ultra-narrowband LASER illumination for the detection and examination of every last trace of forensic evidence”

Crime-lite[®] LASER

BLUE 447

GREEN 520

Forensic LASER Technology

Output Power x Portability

Surgically Precise Illumination

Available in Blue (447nm) & Green (520nm) wavelengths, the Crime-lite LASER provides surgically precise illumination designed to excite fluorescence within a narrow 2nm bandwidth, illuminating only the desired target evidence without exciting any unwanted background fluorescence.

High-intensity LASER output

Blue 447nm | Green 520nm

Intense shadow-free illumination

Powerful divergent beam

Triple-Locked Safety

Class 3B LASER technology

User-first design

Advanced Functionality

Including self-test & dark adaption



Why Crime-lite LASER?

Precise LASER Illumination

Tightly focussed beam for increased light intensity:

- ▶ Illuminate Target Evidence
- ▶ Pinpoint LASER Accuracy
- ▶ Increase Evidence Contrast

Complete End-User Safety

Triple-interlocked safety features include:

- ▶ Passcode activation
- ▶ Dead Man's Trigger
- ▶ Mechanical Beam Shutter

Detect Every Last Trace

Reduce unwanted fluorescence to reveal evidence including:

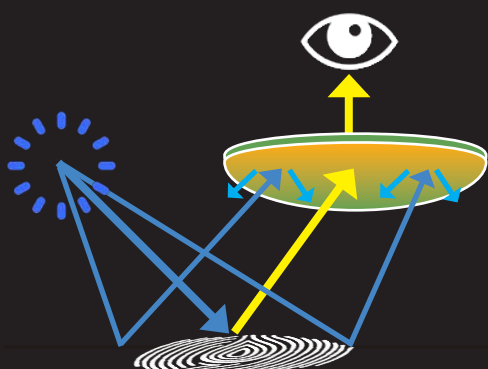
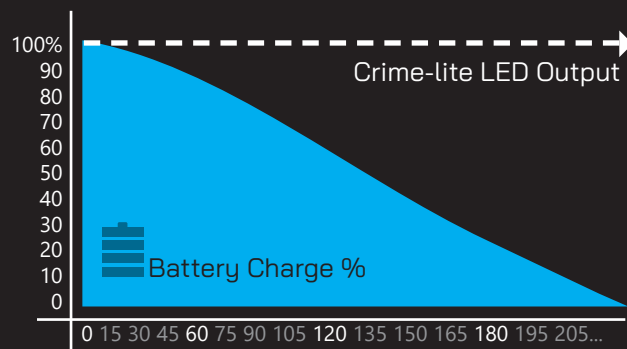
- ▶ Latent Fingermarks
- ▶ Minute Traces of DNA
- ▶ Narcotics, GSR and More

Crime-lite TECHNOLOGY

High-Intensity LED Output

Crime-lite ALS kits are built to the highest possible standards, using quality materials, and subjected to rigorous testing and control measures.

LEDs have an operating life of approx. 50,000hrs and provide 100% light output, 100% of the time, regardless of battery drain.



PRO VISION Performance

PRO VISION goggles and camera lens filters maximise the visibility of evidence under high-intensity illumination.

Anti-glare coating prevents lens auto-fluorescence and reflects illumination back onto the evidence under examination.

PRO VISION Convenience

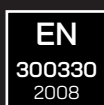
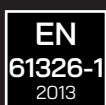
PRO VISION goggles attach (via magnets) to a light-weight and comfortable headset allowing the user to quickly switch between viewing wavebands on the fly.

PRO VISION Viewing Goggles provide a simple but effective upgrade to existing fluorescence viewing filters.



Meeting, Setting, and Exceeding Standards

Crime-lite light sources meet or exceed the following standards:



Choose a standard kit, or visit www.fosterfreeman.com to configure a Crime-lite Kit that meets your evidence search & detection requirements:

Crime-lite 82S PRO



Laboratory Examination Kit



16x
LEDs

PRO
VISION



- ▶ 9 high-intensity LED light sources
- ▶ PRO Vision viewing goggles
- ▶ PRO Vision camera lens filters
- ▶ PRECISION examination accessories
- ▶ Battery and Mains power kit
- ▶ Optional laboratory arm

Crime-lite 82S PRO



Crime Scene Investigation Kit



16x
LEDs

PRO
VISION



- ▶ 9 high-intensity LED light sources
- ▶ PRO Vision viewing goggles
- ▶ PRO Vision camera lens filters
- ▶ Hi-output battery power kit
- ▶ CSI case with trolley
- ▶ CSI accessory kit

Crime-lite LASER



LASER Examination Kit



3b
LASER

PRO
VISION



- ▶ Blue & Green LASER light sources
- ▶ PRO Vision viewing goggles
- ▶ PRO Vision camera lens filters
- ▶ Self-Test Diagnostics
- ▶ Battery and Mains power kit
- ▶ LASER safety training

Crime-lite 42S CORE



Compact CSI Kit



8x
DUAL
LED

DUAL
VISION



- ▶ 3x Dual-LED light sources
- ▶ DUAL Vision viewing goggles
- ▶ PRO Vision camera lens filters
- ▶ CSI case and accessories



Choose **Crime-lite CORE** for Multi-Spectral Imaging Solutions:

Multispectral imaging is essential for forensic investigators when searching for evidence because different materials and substances react differently to various wavelengths, revealing hidden or obscured evidence that might otherwise go unnoticed.

Choose **Crime-lite CORE** for Simple and Efficient Investigations:

Switch between examination wavelengths to detect and examine a wide variety of evidence types. Save time and effort through the use of a multiwavelength light source in combination with Crime-lite interchangeable evidence viewing goggles.

Choose **Crime-lite CORE** for Cost Effective Examination Without Compromise:

Versatile and adaptable to various forensic applications, Crime-lite CORE light sources provide highly effective narrowband illumination for crime scene and laboratory examinations.

Crime-lite® CORE

Versatile forensic ALS tools for the detection and examination of evidence at the crime scene, in the laboratory, and beyond.

Crime-lite® X X10 X5

Multispectral LED Alternate Light Sources

9

Crime-lite® 42S Core

Dual-Waveband LED Alternate Light Sources

10

Crime-lite® 2

2nd Generation Single LED Alternate Light Sources

11

*“Handheld, Multi-Spectral LED Light Source with Advanced Functionality:
The biggest leap forward in Forensic Light Source technology for over 20 years.”*

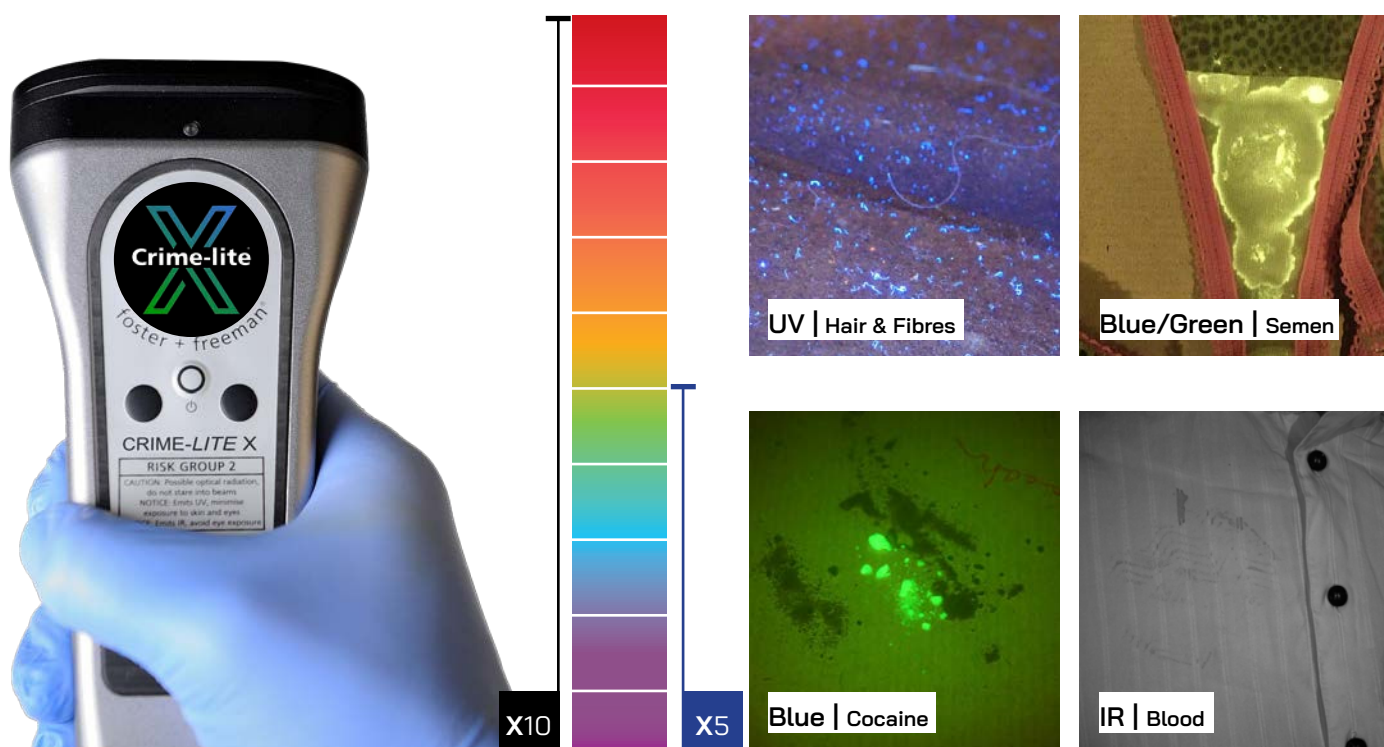
Crime-lite® X

Multispectral LED Light Sources

X₁₀

X₅

A complete ALS kit in a single light source, the Crime-lite X enables the examiner to seamlessly switch between White, UV, Violet, Blue, Blue/Green, Green, Orange, Red, and Infrared LEDs, to perform a comprehensive multi-spectral examination of a crime scene.



Why Crime-lite X?

The Complete ALS Device

A complete ALS kit in a single light source:

- ▶ Multi-LED Light Sources
- ▶ Switch between Wavelengths
- ▶ Up to 175x Combinations

Built-in Functionality

Control device functions via the integral LED interface:

- ▶ Cycle Wavebands
- ▶ Self-Test Diagnostics
- ▶ Dark Adaptation Checker

For Every Evidence Type

Reveal more evidence using multispectral illumination:

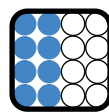
- ▶ X5 Serology ALS
- ▶ X10 for Fingerprints
- ▶ X10 for General Search

“The first high intensity dual-colour forensic Crime-lite for CSI and lab applications.”

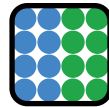
Crime-lite® 42S

Dual-Waveband LED Light Sources

Switchable between two arrays of 8 high-intensity LEDs, the Crime-lite 42S provides the examiner with three illumination outputs in a single alternate light source.



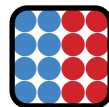
Blue/White
First Responder



Blue/Green
Fluorescence



Blue/Blue Green
Fluorescence



Blue/Green
for fpNatural



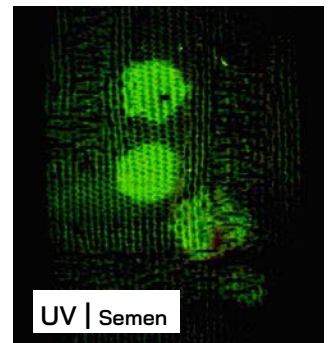
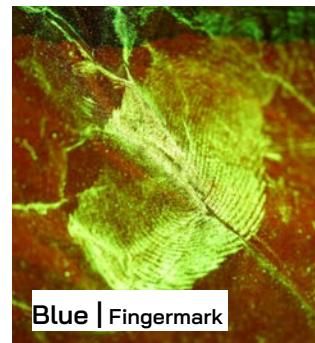
UV/Violet
Skin and DNA



Green/Orange
Fingermarks



UV/Infrared
Beyond Visible



Why Crime-lite 42S?

The 2-in-1 ALS Solution

Providing 2 LED wavelengths in every light source:

- ▶ Multiple LED Combinations
- ▶ Switch Between Outputs
- ▶ 8x LEDs per Wavelength

Versatility x Usability

Maximise the search for evidence:

- ▶ Simple 3-way LED Control
- ▶ Twin-Filter Viewing Goggles
- ▶ Adjustable Output Intensity

Evidence-Based LED Pairings

Dual-wavelength light sources in practical combinations:

- ▶ White/Blue CSI Search
- ▶ UV/IR Beyond Visible Search
- ▶ UV/V Body Fluid Search

“With thousands of units in active use by CSI and forensic investigators worldwide, the Crime-lite 2 has proven effectiveness and reliability.”

Crime-lite[®] 2

2nd Generation LED Light Sources

The Crime-lite 2 range of single-LED light sources has been designed to maximise the clarity of forensic evidence and is highly effective at short range for the location and examination of evidence.

Providing even, shadow-free illumination, the range includes a white light model for general search and eight narrow band light sources with wavelengths in UV, violet, blue, blue-green, green, orange, red, and infrared for beyond visible examinations.



Why Crime-lite 2?

Tried & Trusted Technology

Used by forensic examiners worldwide:

- ▶ Thousands of Units in Use
- ▶ Used in Numerous Cases
- ▶ Trusted by Experts

Simple & Highly Effective

2nd generation Crime-lite technology:

- ▶ Integrated Light and Battery
- ▶ One-Button Operation
- ▶ 50'000 Hour LED Lifetime

100% Crime-lite Quality

High quality components, built to perform:

- ▶ Intense shadow-free beam
- ▶ Always 100% light output
- ▶ Solid, Robust Construction

Crime-lite® LAB

In the laboratory, Crime-lite illumination can significantly enhance the quality and efficiency of investigations. Using a bench or wall-mounted Crime-lite screening system, examiners can quickly and easily reveal evidence including blood, bodily fluids, and other invaluable sources of DNA.

Crime-lite® ML PRO

Advanced Laboratory Screening System

The Crime-lite ML PRO is the first in a new generation of evidence screening tools built to meet the demands of busy forensic labs tasked with processing large quantities of evidence.

With fully-integrated UV-Vis-IR illumination and an 'intelligent optics' imaging system, the ML PRO can be used to mark-up evidence, detecting the presence of bodily fluids, and locating minute fragments of trace evidence.



- Search for and Detect Evidence
- Capture UV-Vis-IR Images
- Generate Reports

Crime-lite® ML 2

Bench Top Light Source & Magnifier

Combining multi-wavelength illumination with wide area magnification, the Crime-lite ML2 is an ideal system for the examination and 'mark-up' of evidence in the laboratory.

Used in forensic facilities worldwide, the uncomplicated Crime-lite ML2 includes a choice of LED wavelengths and may also be upgraded through the addition of a UV-Vis-IR camera attachment.



- Choice of Wavelengths
- Integrated Magnifier Lens
- Optional Camera Module

Crime-lite[®]

Ready to Find Out More?



fosterfreeman.com/forensic-light-sources/

foster+freeman

foster+freeman UK
info@fosterfreeman.com
+44 (0)1386 768 050

foster+freeman USA
usoffice@fosterfreeman.com
888 445 5048

foster+freeman EU
de.sales@fosterfreeman.com
+49 (0) 2102 5576 525

foster+freeman NL
nl.sales@fosterfreeman.com
+31 (0)6 1114 3858