



# Crime-lite<sup>®</sup> 2

***A complete range of handheld LED light sources for crime scene investigation and forensic laboratory examination***

- LED light sources across nine wavebands from UV to IR
- Intense uniform beam quality
- 100% light output, 100% of the time
- Precision, anti-glare camera filters and goggles

Foster + Freeman's entry level Crime-lite<sup>®</sup> LED light source range includes eight high intensity light sources designed to maximise the clarity of forensic evidence.

foster + freeman

# Crime-lite<sup>®</sup> 2

FOR CRIME SCENE INVESTIGATION  
AND LABORATORY EXAMINATION

Suitable for use in the forensic laboratory and for crime scene investigation, Crime-lite 2 light sources are compact and versatile tools for the detection and examination of evidence.

The range includes a white light model for general search and eight narrow band wavelengths in UV, violet, blue, blue-green, green, orange, red and IR.

With thousands of units in active use by forensic investigators worldwide the Crime-lite 2 demonstrates effectiveness, exceptional build quality and reliability.

## Product Features

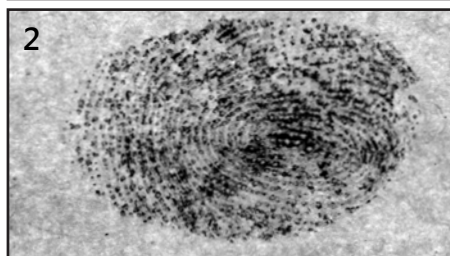
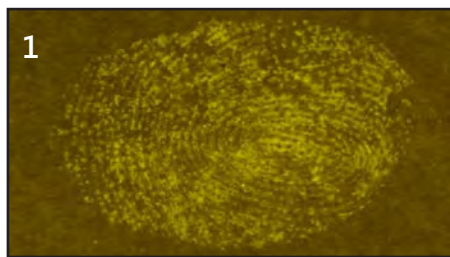
- Fitted with a high power LED
- Constructed from anodised aluminium
- Lightweight, high capacity batteries
- 2 to 4 hours of operating time on fully charged battery
- Wavelength tuned to match viewing goggles



Output	10% band width	Peak
White	400-700nm	N/A
UV	350-380nm	365nm
Violet	400-430nm	410nm
Blue	420-470nm	445nm
Blue/Green	445-510nm	475nm
Green	480-560nm	520nm
Orange	570-610nm	590nm
Red	610-660nm	640nm
Infrared	800-900nm	860nm

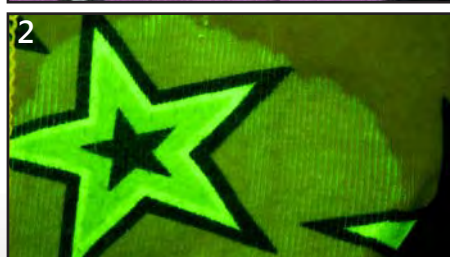
LEDs	1 x high efficiency LED
LED Power Output	up to 1.2W dependent on wavelength
Runtime	Continuous with adaptor
Battery life	Up to 290 minutes
Charge time	10 - 100 minutes
Weight	460g

# Crime-lite® Applications



## TFD treated fingerprints:

1. Fingerprint on white envelope, viewed with blue/green light through 550nm filter.
2. The same print enhanced using the Foster + Freeman DCS 4 fingerprint capture workstation

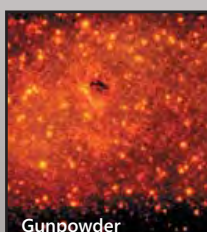
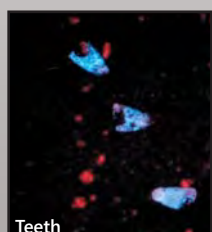
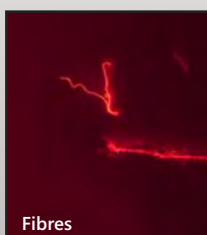
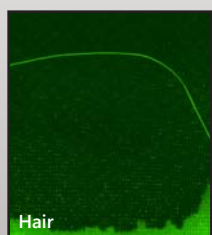


## Semen on fabric

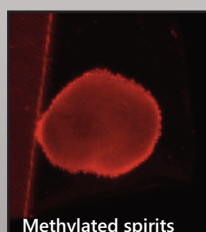
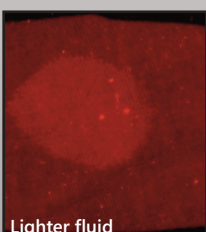
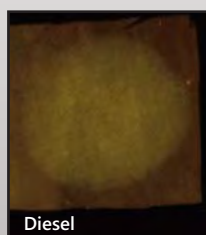
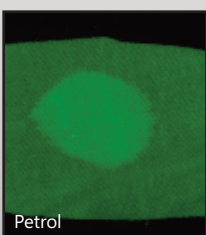
1. Semen stain on multi-coloured fabric
2. Semen stain viewed using blue light through a 530nm filter

Crime-lite® 2	WHITE	UV	VIOLET	BLUE	BLUE/GREEN	GREEN	ORANGE	RED	INFRARED
Blood stains		✓		✓	✓				✓
Blood spatter		✓		✓	✓				✓
Body bruising & bite marks		✓	✓	✓					
Body fluids			✓	✓	✓				
Bone & tooth fragments					✓	✓	✓		
Hair				✓	✓				
Fibres	✓	✓	✓	✓	✓	✓	✓		✓
Gunshot residues					✓	✓			✓
Some drug residues			✓	✓					
Accelerants					✓	✓	✓		
Redwop					✓	✓			
Nanoparticles			✓	✓	✓	✓			
DFO						✓	✓	✓	
Greenwop						✓			
Rhodamine 6G						✓			
Basic yellow				✓	✓				
Acid yellow					✓				
Ardrox			✓	✓					
Magnetic red powder					✓				
Ninhydrin	✓					✓			
General mixed debris	✓	✓	✓	✓	✓	✓	✓	✓	
General contrast search	✓							✓	
Shoeprints & dust marks	✓								

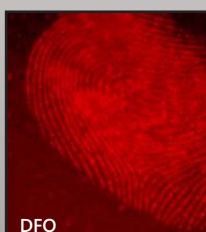
## Trace evidence



## Accelerants



## Fingerprints



# Crime-lite® 2 cased kits

Foster + Freeman Crime-lites® are available individually or as cased kits containing all of the accessories required to begin searching for and examining evidence.

Below are a selection of standard kits that meet the requirements of the majority of Crime-lite® users, if you would like to specify your own custom kit please contact our sales office or your local Foster + Freeman agent.



## Crime-lite® light sources included in kit

Cased Kits	Crime-lite® light sources included in kit							
	WHITE	UV	VIOLET	BLUE	BLUE/ GREEN	GREEN	ORANGE	RED
<b>BASIC SEARCH KIT</b> QCL2/2KITBG/G				✓		✓		
<b>BODY FLUIDS SEARCH KIT</b> QCL2/3KIT/G	✓	✓		✓				
<b>CSI SEARCH KIT</b> QCL2/4KIT/G	✓	✓		✓		✓		
<b>ADVANCED CSI SEARCH KIT</b> QCL2/5KIT/G	✓		✓	✓	✓	✓		
<b>COMPLETE CRIME-LITE® 2 KIT</b> QCL2/8KIT/G	✓	✓	✓	✓	✓	✓	✓	✓



### Crime-lite Kit Accesories

Included as standard in every cased kit

#### VIEWING GOGGLES & CAMERA LENS FILTERS

- Viewing goggles
- 62mm camera filters and filter pouch
- UV safety glasses (where applicable)
- Dark adaptation goggles
- Kits containing White light source include interchangeable Blue, Green and Red contrast filters.

#### CRIME-LITE® POWER KIT

- Rechargeable batteries (1,2, or 3x dependent upon kit)
- Lifespan preserving battery charger.
- Battery tester

#### SCENE OF CRIME CASE

- Medium or Large SOC case with machined foam cut-outs to accomodate all light sources in kit.
- Crime-lite Eye Darkness Adaptation Checker
- Kit also includes magnifier attachment (QCL/05)



Crime-lite products are classified to EU safety standard EN62471:2008

# Crime-lite<sup>®</sup> Camera Filters, Viewing Goggles, and Accessories

## CAMERA FILTERS AND VIEWING GOGGLES

Crime-lite<sup>®</sup> 2 cased kits are supplied with standard glass camera filters and viewing goggles. Additional anti-glare camera filters and viewing goggles are also available for the examination of fluorescent evidence under intense illumination.

Anti-glare filters and goggles are manufactured with Schott glass and feature an additional long-pass coating to suppress auto-fluorescent emissions from the filter glass, thus ensuring maximum optical performance with high power light sources.



Filter	Pale Yellow	Yellow	Orange	Red	UV
Used with...	Violet Crime-lite	Blue Crime-lite	Blue/Green Crime-lite	Green Crime-lite	UV Crime-lite
Wavelength	455nm	495nm	550nm	590nm	420nm
1% transmission	435nm	476nm	529nm	571nm	408nm

### Product Codes

Camera filters: Standard	QCL/66	QCL/67	QCL/68	QCL2/115	QCL2/118
Camera filters: Anti-glare	QCL/152	QCL/153	QCL/154	QCL/156	QCL/157
Viewing goggles: Standard	QCL/16	QCL/17	QCL/18	QCL2/117	N/A
Viewing goggles: Anti-glare	QCL/147	QCL/148	QCL/149	QCL/151	N/A

## SCENE OF CRIME AND LABORATORY ACCESSORIES

† INCLUDED IN CRIME-LITE 2 CASED KITS



**NEW** Crime-lite 2 Infrared Examination Accessories

Crime-lite UV-Vis-IR Camera QCL/82S/CAM  
 Crime-lite 2 camera mount QCL/248  
 Laboratory arm (not shown) QCL/205



Magnifier attachment

QCL/05 †



Polarising filter set

QCL/30



Tripod & Adaptor

QCL/14 & QCL/15



Scene of Crime case

Standard QCL2/011 †  
 Small QCL2/013 †



Crime-lite Eye Dark Adaptation Checker

Standard QCL/264 †



Dark Adaptation Goggles

QCL/266 †

## BATTERIES & POWER SUPPLY COMPONENTS

### Standard NiMH Batteries

Replacement Battery QCL/13B †  
 Battery Tester QCL/204 †  
 Battery Charger QCL/06/C †  
 Multi-Battery Charger QCL/172  
 AC Power Adaptor QCL/32  
 12V DC inverter QCL/125

### High Capacity NiMH Batteries

High capacity battery QCL/81  
 High capacity battery DC adaptor QCL/124  
 High capacity battery charger QCL/82  
 High capacity battery connector QCL/83  
 High capacity battery pouch QCL/84



QCL/13B



QCL/06/C



QCL/172



QCL/32

# Crime-lite®

complete range of LED forensic light sources for crime scene and laboratory examination

## Crime-lite XL

The worlds most powerful handheld LED forensic light source, the Crime-lite XL features 96 surface mount LEDs providing up to 115 Watts of radiant power capable of revealing the minutest traces of evidence.

## Crime-lite 82S

Where serious crime demands intensive crime scene investigation, the 16 LED Crime-lite 82S offers levels of illumination that will almost certainly increase the detection of evidence.

## Crime-lite 82L

16 high intensity white LEDs mounted behind a cylindrical lens give a wide, thin light sheet that is ideal for detecting surface debris and shoe prints in dust.

## Crime-lite 42S

Designed around the needs of the forensic examiner the Crime-lite 42S provides three illumination wavelengths in a single high specification light source.

## WHY CHOOSE CRIME-LITE®?

- High quality of design and construction
- LEDs selected for peak performance and wavelength
- 100% light output throughout battery charge
- Worldwide product support
- High power to weight ratios
- Compact and energy efficient



Crime-lite products are classified to EU safety standard EN62471:2008



	No. of LEDs	LED output power	No. of Wavelengths	Rechargeable Battery	A/C Mains Option	Weight
Crime-lite 2	1	1.2W	9	Yes	Yes	490g
Crime-lite 82S	16	19W	8	Yes	Yes	560g
Crime-lite 82L	16	N/A	8	Yes	Yes	900g
Crime-lite 42S	8+8	19W	6	Yes	Yes	560g
Crime-lite XL	96	115W	4	Yes	Yes	1.75Kg