

**One Crime-lite
Two LED colours
Three wavebands**



NEW Crime-lite 42S UV/IR
with UV-Vis-IR camera & tablet PC

Crime-lite[®] 42S

The first high intensity dual-colour forensic Crime-lite[®] for crime scene and laboratory applications

- Unique 16 LED dual-colour alternate light sources
- Switch between wavebands at the touch of a button
- Dual waveband anti-glare camera filters and goggles

The Crime-lite[®] 42S provides three different illumination wavebands in a single high specification light source.

Two arrays of 8 LEDs of differing wavebands can be used alternately or in combination for the fluorescence examination of evidence including, blood, fibres, accelerants, gun shot residues, and chemically treated fingerprints.

foster + freeman

Crime-lite[®] 42 S

SWITCHABLE DUAL-COLOUR RANGE OF FORENSIC LIGHT SOURCES

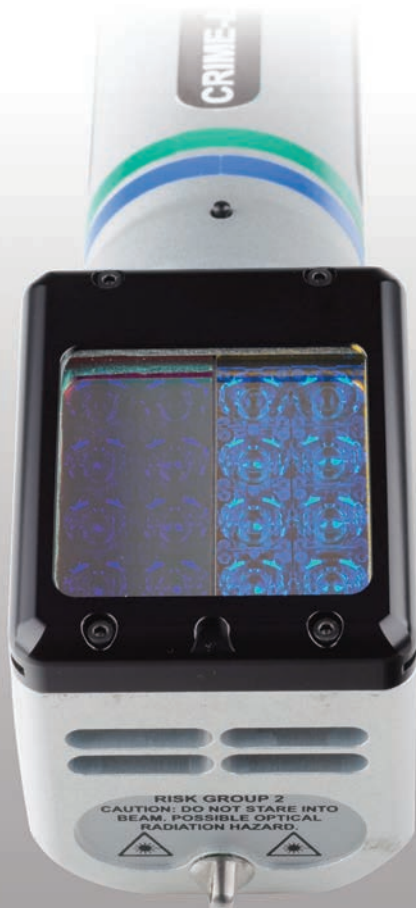
The Crime-lite[®]42S, switchable between two arrays of 8 high intensity LEDs, provides the forensic examiner with three illumination outputs in a single alternate light source.

Using a simple 3-way control the examiner is able to alternate between two narrowband wavelengths or to use all 16 LEDs to provide high intensity wideband illumination.

The ability to detect evidence is enhanced by using differing wavebands and allows forensic examiners to reduce search times.

Crime-lite 42S light sources are available in the following combinations:

White 400-700nm	&	Blue 420-470nm
UV 350-380nm	&	Violet 395-425nm
Blue 420-470nm	&	Blue/Green 445-510nm
Blue 420-470nm	&	Green 480-560nm
Blue 420-470nm	&	Red 600-650nm
Green 480-560nm	&	Orange 570-610nm
Yellow 540-590nm	&	Red 600-650nm
Infrared 800-900nm	&	UV 350-380nm NEW



PRODUCT FEATURES

- 16 high intensity LEDs, 8 of each chosen wavelength
- Constant light output throughout battery charge
- High capacity rapid charge lithium ion battery
- Robust high-specification construction

EXAMINATION FEATURES

- Easily switch between wavelengths
- 10%, 30%, 50% or 100% dimming levels
- Shadow-free beam
- Supplied with twin-filter viewing goggles

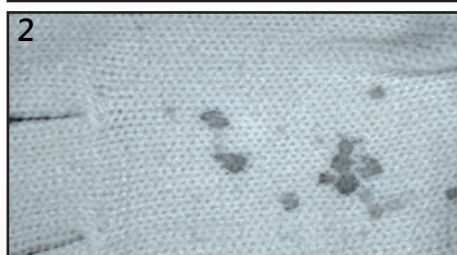
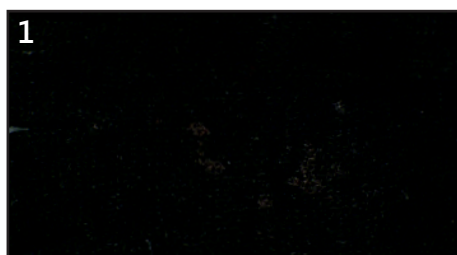
LEDs	16 x high efficiency LEDs (8 of each selected wavelength)
Runtime	Continuous with AC adaptor or up to 750 minutes with battery.
Battery charge time	22minutes
Weight	560g

Crime-lite 42S Applications



Fingerprints on plastic bag

1. Plastic bag is treated with PolyCyano UV.
2. Under UV illumination fingerprints become clearly visible with excellent contrast and ridge detail.



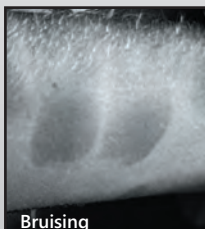
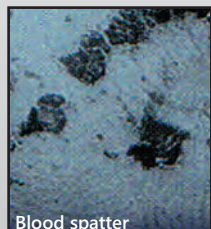
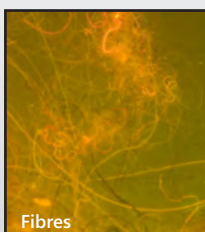
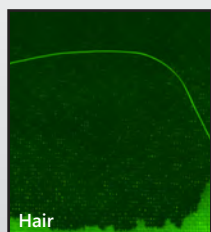
Blood on dark fabric

1. Blood on black woolen glove
2. The colour of the glove 'drops out' under IR leaving the blood stain highly visible

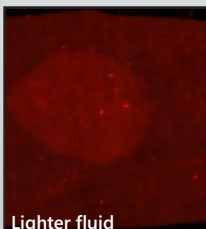
CRIME-LITE COLOUR

	WHITE	UV	VIOLET	BLUE	BLUE/GREEN	GREEN	YELLOW	ORANGE	RED	INFRARED
Blood stains	✓		✓	✓						✓
Blood spatter	✓		✓	✓						✓
Body bruising & bite marks	✓	✓	✓					✓		
Body fluids		✓	✓	✓						
Bone & tooth fragments				✓	✓	✓				
Hair			✓	✓						
Fibres	✓	✓	✓	✓	✓	✓	✓	✓	✓	✓
Gunshot residues				✓	✓					✓
Some drug residues		✓	✓							
Accelerants				✓	✓	✓				
Redwop				✓	✓					
Nanoparticles		✓	✓	✓	✓	✓				
DFO					✓	✓	✓	✓	✓	
Greenwop					✓					
Rhodamine 6G					✓					
Basic yellow				✓						
Acid yellow				✓						
Ardrox		✓		✓						
Magnetic red powder				✓						
Ninhydrin	✓					✓	✓			
fpNatural 1 IR Powder				✓						✓
General mixed debris	✓	✓	✓	✓	✓	✓	✓	✓	✓	✓
General contrast search	✓									
Shoeprints & dust marks	✓									

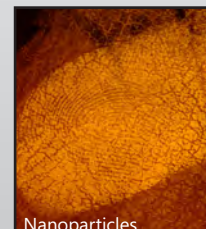
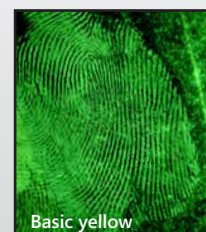
Trace evidence



Accelerants



Fingerprints



Crime-lite® 42S cased kits

Foster + Freeman Crime-lites® are available individually or as cased kits.

Below are a selection of standard kits that meet the requirements of the majority of Crime-lite® users, if you would like to specify your own custom kit please contact our sales office or your local Foster + Freeman agent.



Crime-lite® light sources included in kit

	WHITE BLUE	UV VIOLET	BLUE BLUEGREEN	BLUE GREEN	GREEN ORANGE	YELLOW RED	IR UV	82L
CRIME-LITE® 42S BASIC SEARCH KIT QCL/42S/2KIT	✓	✓						
CRIME-LITE® 42S THREE LIGHT KIT QCL/42S/3KIT	✓	✓	✓					
CRIME-LITE® 42S FOUR LIGHT KIT QCL/42S/4KIT	✓	✓	✓		✓			
CRIME-LITE® 42S FIVE LIGHT KIT QCL/42S/5KIT	✓	✓	✓		✓	✓		
CRIME-LITE® 42S/82L KIT QCL/42SL/5KIT	✓	✓	✓		✓			✓
CRIME-LITE® 42S BEYOND VISIBLE KIT QCL/42UVIR/K							✓	

Crime-lite 42S UV/IR Beyond Visible Kit

The new Crime-lite UV/IR Beyond Visible crime scene search kit provides investigators with a powerful search tool for the detection of blood, fingerprints, body fluids and other forensic evidence that can only be seen beyond the visible spectrum.

- Kit Includes**
- Crime-lite 42S Ultraviolet/Infrared light source
 - 5MP auto-focus camera module
 - Ruggedized tablet PC and holding frame
 - Waterproof carry case with essential accessories



 Crime-lite products are classified to EU safety standard EN62471:2008

Crime-lite Kit Accesories

Included as standard in every cased kit

VIEWING GOGGLES & CAMERA LENS FILTERS

- Anti-glare viewing goggles.
- Dark adaptation goggles.
- Anti-glare 62mm camera filters and filter pouch.
- Kits containing a UV light source also include UV safety glasses.
- Kits that include a white light source include blue, green, and red slide-on contrast filters.
- Narrowband trimming filters.

CRIME-LITE® POWER KIT

- 2 x rechargeable batteries.
- fast battery charger.
- battery adaptor.
- battery pouch with shoulder strap.
- AC adaptor.

SCENE OF CRIME CASE

- SOC case to accomodate all light sources in kit.
- Crime-lite Eye darkness adaptation checker.
- Two detachable belt clips and lanyards.

Crime-lite[®] Camera Filters & Goggles

When examining evidence using high intensity illumination, light reflected from background surfaces cause standard viewing filters to fluoresce, reducing the visibility of fluorescent evidence.

Manufactured using Schott glass with an additional long-pass coating, Foster + Freeman anti-glare filters eliminate the problem of filter fluorescence and are essential for the examination of fluorescent evidence.



DUAL-FILTER ANTI-GLARE VIEWING GOGGLES (INCLUDED IN CRIME-LITE 42S CASED SETS)

Each pair of goggles includes two filters allowing the user to quickly and easily switch between illumination wavebands.

For use with Crime-lite 42S:	UV & Violet		Blue & Green		Blue & Blue/Green		Green & Orange	
Filter	UV	Pale Yellow	Yellow	Bright Red	Yellow	Orange	Red	Bright Red
Wavelength	420nm	455nm	495nm	590nm	495nm	550nm	645nm	590nm
1% transmission	408nm	435nm	476nm	571nm	476nm	529nm	624nm	571nm
Product Code	QCL/42/04		QCL/42/01		QCL/42/02		QCL/42/03	

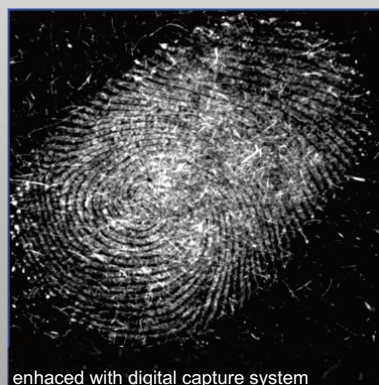
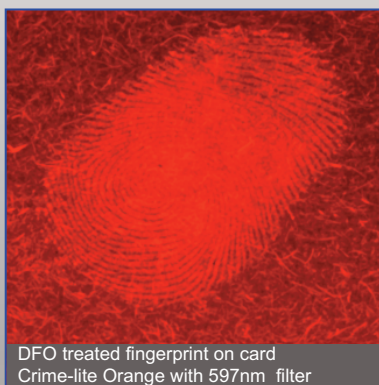
CAMERA FILTERS (INCLUDED IN CRIME-LITE 42S CASED SETS)

Camera lens filters are supplied in single wavebands, thread size 62mm (other sizes available upon request)

For use with Crime-lite 42S:	Violet	Blue	Blue/Green	Green	Orange	UV
Filter	Pale Yellow	Yellow	Orange	Bright Red	Red	UV
Wavelength	455nm	495nm	550nm	590nm	645nm	420nm
1% transmission	435nm	476nm	529nm	571nm	624nm	408nm
Product Code	QCL/152	QCL/153	QCL/154	QCL/156	QCL/82S/017	QCL/157

NARROW BAND TRIMMING FILTERS (INCLUDED IN CRIME-LITE 42S CASED SETS)

Narrow band trimming filters clip-on to the Crime-lite[®] 42S further reducing the output bandwidth reducing interference from background or substrate fluorescence.



Filter	Wavelength	Product Code
Violet	410nm	QCL/82S/018
Blue	448nm	QCL/82S/019
Blue/Green	475nm	QCL/82S/020
Green	522nm	QCL/82S/021
Orange	597nm	QCL/82S/022

Crime-lite® Accessories

CRIME-LITE® VIEWING BOX

For use with the Crime-lite® 42S and 82S, the Crime-lite® Viewing Box provides complete ambient light shielding for visual and photographic examination of evidence.

Crime-lite® Viewing Box	QCL/215	1
Basic camera stand	QCL/216	2
Lens bellows	QCL/217	3
Lens bellows adaptor	QCL/218	4



CRIME-LITE® BEYOND VISIBLE SEARCH KIT

For use with the Crime-lite® 42S UV/IR and the 82S IR, the Crime-lite® Beyond Visible Search Kit provides a complete portable solution for searching the crime scene and the examination of evidence using infrared illumination.

Crime-lite® UV-Vis-IR Camera	QCL/82S/CAM	1
Ruggedized tablet PC	QCL/253	2
Holding Frame	QCL/252	3
UV/IR Pass Camera Filter	QCL/254	not shown



POWER SUPPLY COMPONENTS & CARRY CASES

† Items supplied in Crime-lite 42S Kit



Rechargeable battery
(Requires adaptor)
QCL/82S/008B †



Battery charger
22 minutes charge time
QCL/82S/009 †



Vehicle battery charger
60 minutes charge time
QCL/82S/010



Battery adaptor
for rechargeable battery
QCL/82S/011 †



AC adaptor
90-240V input
QCL/80 †



Battery pouch
with nylon strap
QCL/82S/012 †



SOC case
Large QCL/82S/014
Small QCL/82S/013



SOC trolley & strap
Carries SOC cases
QCL/206



Telescopic pole
Extendable to 880mm
QCL/85



Wrist lanyard
Prevents dropping
QCL/82S/023 †



Crime-lite Eye
Dark Adaptation Checker
QCL/264 †



Dark Adaptation
Goggles
QCL/266 †